
Ethnic Statistics in East Asian Countries: Foreign Brides' Surveys

Danièle Bélanger, University of Western
Ontario, Canada

Hye-Kyung Lee, Pai Chai University, South
Korea

Hong-zen Wang, National Sun Yat Sen
University





Figure 1. Number of International Marriages In Korea and Taiwan, 1998-2006

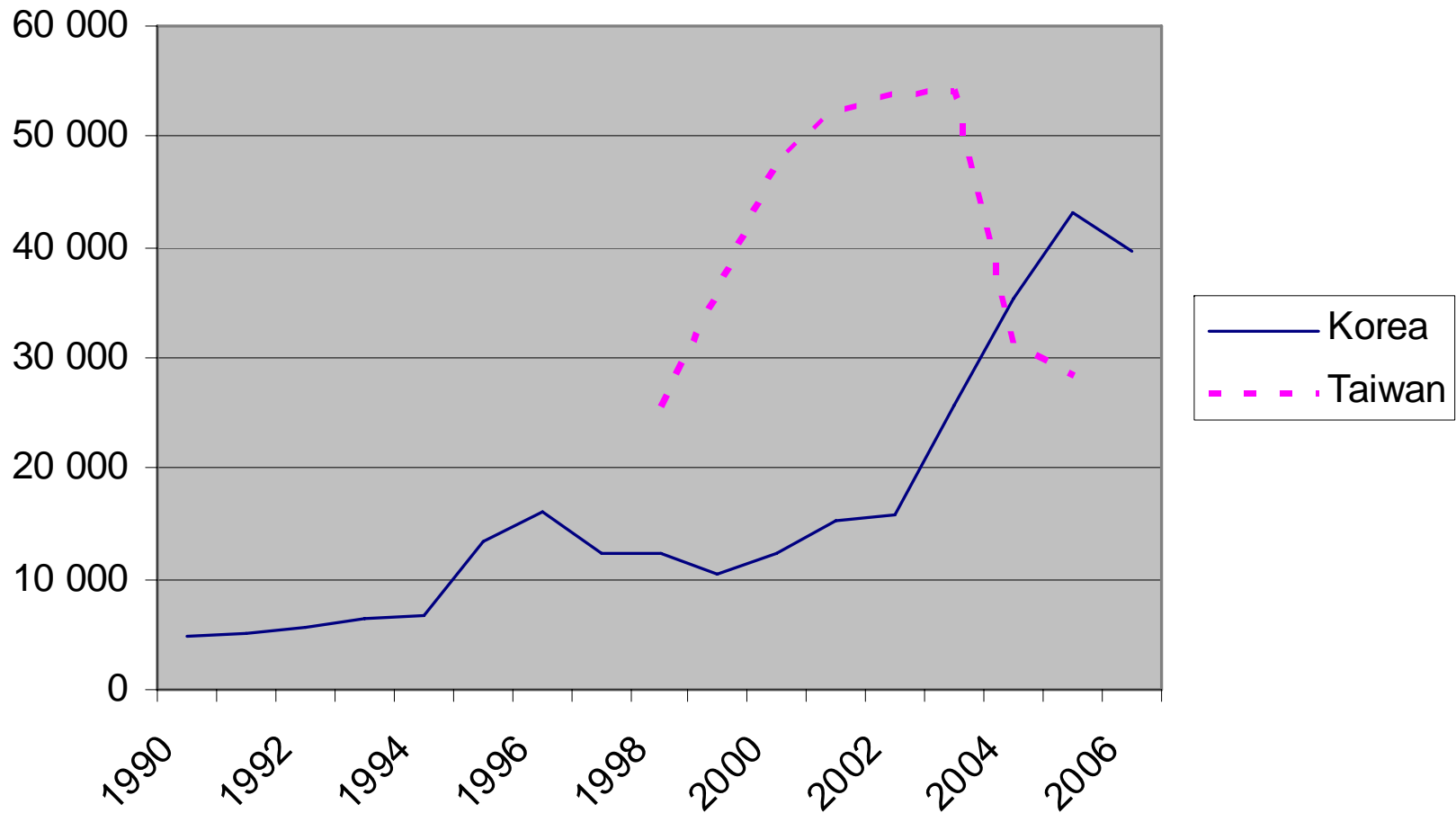


Figure 2. Number of Foreign Spouses by Nationality

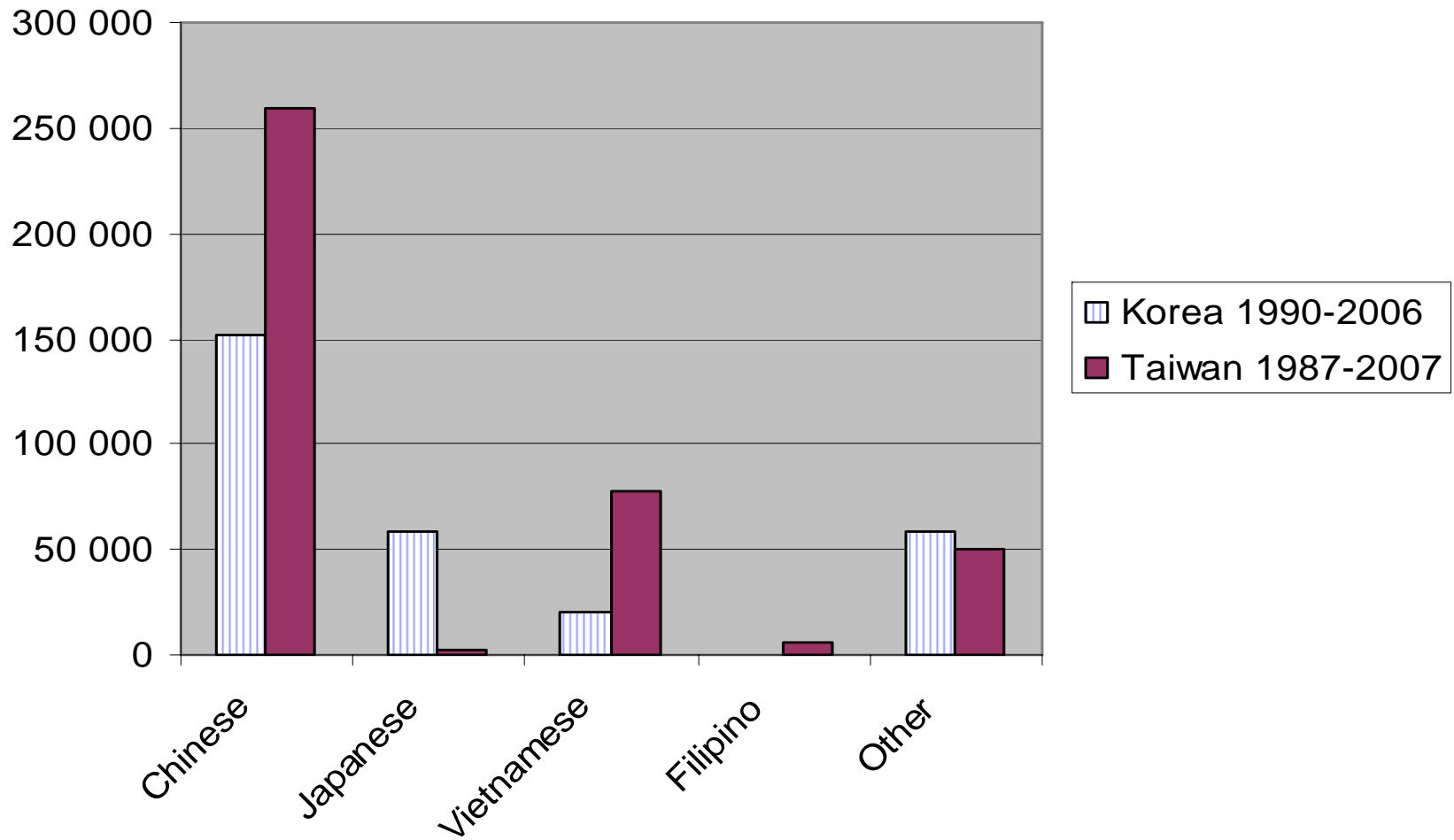
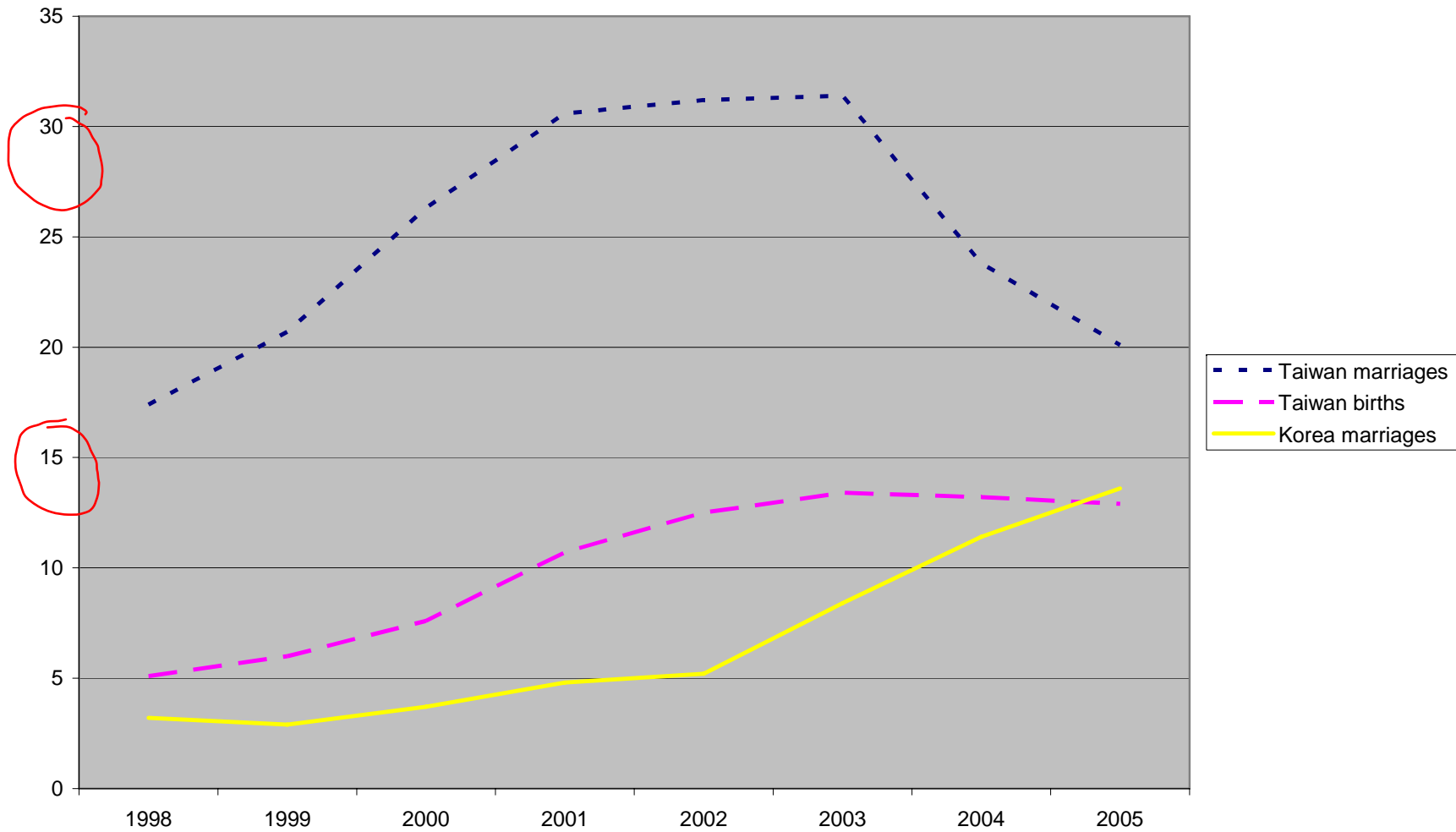


Figure 3. Taiwan and Korea. Percentage of marriages with a foreign spouse and percentages of births to a foreign mother.



Policy response to increasing ethnic diversity

■ Initial

- Assimilation
- 'They are not immigrants, they are part of our families.'

■ Recent

- Integration
- Multiculturalism
 - 2002: TAIWAN
 - 2006: JAPAN AND KOREA

Counting and collecting data on foreign brides

■ Surveys

- Taiwan: 2002
 - Korea: 2005 and 2006
-

Taiwan

Ministry of Interior Affairs

- ❑ n=175,894
 - ❑ Census on living conditions of foreign and mainland Chinese Spouses
 - ❑ Short questionnaire
-

Korea

- 2005

- n=945
- Ministry of Health and Welfare, Survey for the Welfare of the International marriage family
- Survey for the welfare state of the international marriage family

- 2006

- n=1,117
 - Ministry of Gender Equality and Family
 - Survey on the conjugal life of the international family
 - long questionnaire
-

Ethnic classifications

■ Co-ethnics

- ❑ Other nationalities but similar culturally, part of the 'family'
- ❑ Ethnic Koreans: Japan, China, Russia, Uzbekistan, Kazakhstan
- ❑ Ethnic Chinese: China

■ Foreigners

Statistical data as politics

- How are immigrants constructed through these questionnaires?

Located in the domestic sphere

- Wives
 - Mothers
-

Common themes

- Immigrant spouses
 - ❑ at high risk of difficulties
 - ❑ as potential victims
 - ❑ as problematic mothers
 - ❑ as lacking support and suffering social exclusion
 - ❑ as disconnected from their country of origin
-

- Children of female immigrant spouses

- as potentially problematic children

- learning disabilities
 - suffering discrimination in school
 - at risk of poor school performance
 - at risk of health problems
-

-
- Silences and gaps
 - Immigrant spouses :
 - as workers (outside the household)
 - as connected individuals (Taiwan)
 - as contributing citizens
 - as active agents of the adaptation process
-

Conclusion

- Surveys are important and have informed policy
 - Narrowly construct foreign spouses and could reinforce stereotypes
 - Need to broaden the scope
 - Political issue: who will be in charge and get the money?
-